

# Trailer hitch data sheet

---

Date \_\_\_\_\_

Request

Order

## 1. General data

Company \_\_\_\_\_ Contact person \_\_\_\_\_  
 Customer no. \_\_\_\_\_ (if available) Phone \_\_\_\_\_  
 ZIP-Code and city \_\_\_\_\_ E-mail \_\_\_\_\_  
 Street, house number \_\_\_\_\_

## 2. Towing vehicle data

Vehicle manufacturer \_\_\_\_\_ Permissible vehicle weight \_\_\_\_\_  
 Vehicle type \_\_\_\_\_  
 Year of construction \_\_\_\_\_  
 VIN \_\_\_\_\_  
 Permissible speed \_\_\_\_\_

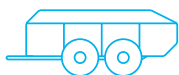
Lighting system	Power supply
12V	12V
24V	24V

## 3. Trailer data

Vehicle manufacturer _____	Lighting system	ABS System (if fitted)	EBS System (if fitted)
Vehicle type _____	12V	12V	12V
Year of construction _____	24V	24V	24V

## 4. Trailer loads and drawbar loads

### Centre-axle trailer



Permissible trailer load ( $F_z$ ) \_\_\_\_\_ kg  
 Drawbar load ( $F_{ST}$ ) \_\_\_\_\_ kg

### Articulated drawbar trailer



Permissible trailer load ( $F_z$ ) \_\_\_\_\_ kg

Data confirmation of the permissible trailer loads and supporting loads by the vehicle manufacturer available

For the application for the operating permit, a manufacturer's certificate on the permissible trailer and drawbar load is required according to the currently valid Road Traffic Licensing Regulations. The permissible axle load and the permissible total weight must be complied with when operating the tractor unit and the vehicle combination with a centre-axle trailer. If no drawbar load is permitted, only one articulated drawbar trailer may be operated.

## 4. Position and installation method

### 4.1 Towing vehicle details

Average hitch height above ground:

H1 = \_\_\_\_\_ mm

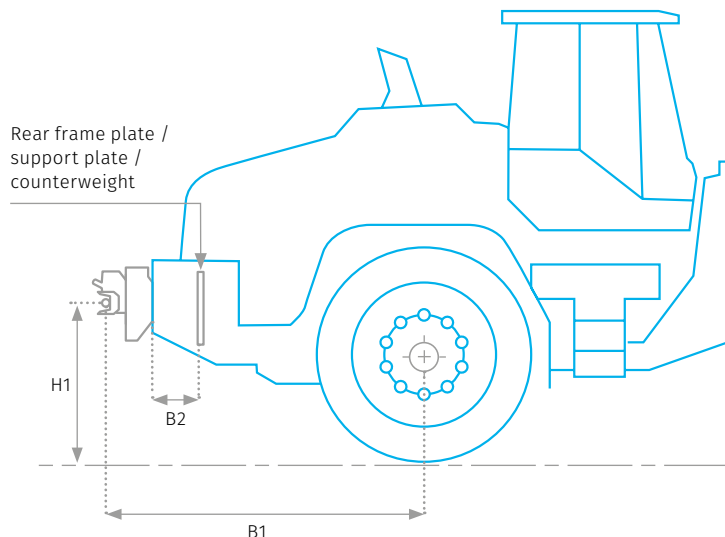
Horizontal distance between rear axle and hitch point:\*

B1 = \_\_\_\_\_ mm

Distance between support plate and outer outline of the counterweight:\*

B2 = \_\_\_\_\_ mm

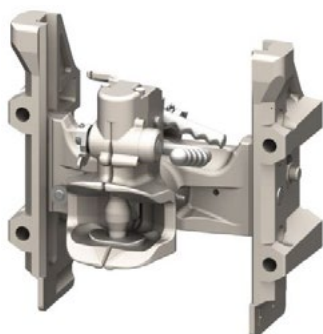
\*optional specification



### 4.2 Installation method

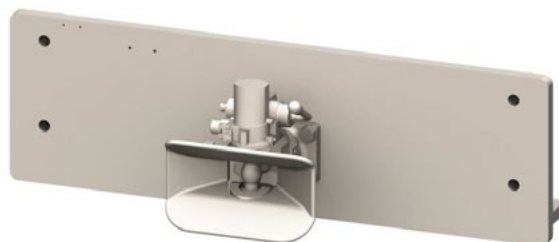
All hitches are available as a height-adjustable and a fixed hitch version.

#### Height-adjustable hitch in the tow-bar



adjustable in  
4 positions  
  
adjustment range  
up to 168mm

#### Fixed hitch



Please indicate the required average hitch height above ground:

H1 = \_\_\_\_\_ mm

## 5. Hitch types

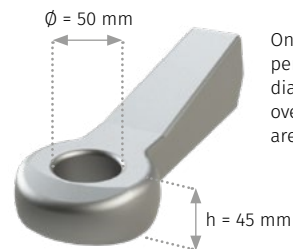
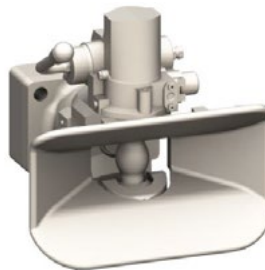
### Ball hitch AHK0008

- Ball diameter:  $\varnothing = 50$  mm
- Hole pattern: 83 x 56 mm
- Fastening bolts: 4 x M10



### Pin hitch AHK0015

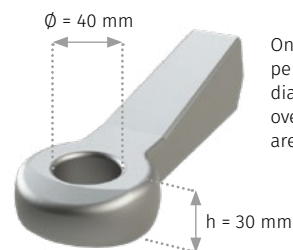
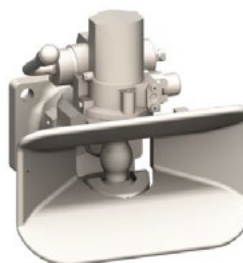
- Pin shape: ball
- Pin diameter:  $\varnothing = 48,7$  mm
- With clevis
- Hole pattern: 160 x 100 mm
- Fastening bolts: 4 x M20



Only towing eyes as per DIN74053 with a diameter  $\varnothing = 50$  mm and overall height  $h = 45$  mm are permissible!

### Pin hitch AHK0016

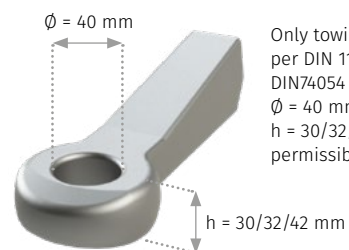
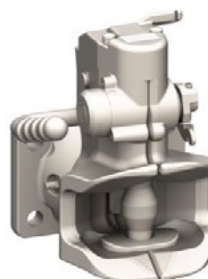
- Pin shape: ball
- Pin diameter:  $\varnothing = 38$  mm
- With clevis
- Hole pattern: 160 x 100 mm
- Fastening bolts: 4 x M20



Only towing eyes as per DIN74054 with a diameter  $\varnothing = 40$  mm and overall height  $h = 30$  mm are permissible!

### Pin hitch AHK0012

- Pin shape: ball
- Pin diameter:  $\varnothing = 38$  mm
- Hole pattern: 140 x 80 mm
- Fastening bolts: 4 x M16



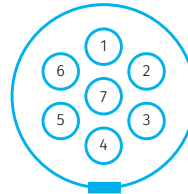
Only towing eyes as per DIN 11026, DIN 11043 or DIN74054 with a diameter  $\varnothing = 40$  mm and overall height  $h = 30/32/42$  mm are permissible!

## 6. Electrical equipment

### 6.1 Sockets for lighting system

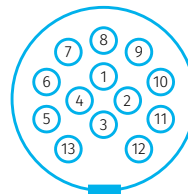
#### Socket LST1207

- as per ISO 1724
- voltage: 12V
- 7 Pins



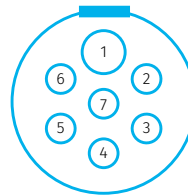
#### Socket LST1213

- as per ISO 11 446
- voltage: 12V
- 13 Pins



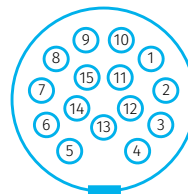
#### Socket LST2407

- as per ISO 1185
- voltage: 24V
- 7 Pins



#### Socket LST2415

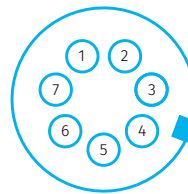
- as per ISO 12 098
- voltage: 24V
- 15 Pins



### 6.2 Sockets for ABS / EBS systems

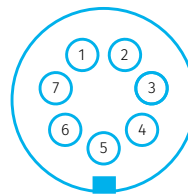
#### ABS socket ABS1205

- as per ISO 7638-2
- voltage: 12V
- 5 Pins



#### ABS / EBS socket 446 008 433 2

- as per ISO 7638-1
- voltage: 24V
- 7 Pins



Any other info you would like to share

Feel free to contact us  
if you have any questions.

Call us at

+49 (0) 4251 9340-0

Mail us at

[info@tietjengmbh.de](mailto:info@tietjengmbh.de)