

# Brake calculation data sheet

---

## Agricultural and forestry trailers

Date \_\_\_\_\_

Request

Order

### Calculation as per

§ 41 StVZO (e. g. for national individual approval in Germany)

EU 2015/68 (e. g. for EU type approval)

ECE-R13

### Calculation for

Already existing air brake systems/components

New air brake systems

## 1. Contact information

Company \_\_\_\_\_ Contact person \_\_\_\_\_  
Customer no. (if available) \_\_\_\_\_ Phone \_\_\_\_\_  
ZIP-Code, city \_\_\_\_\_ E-Mail \_\_\_\_\_  
Street, house no. \_\_\_\_\_

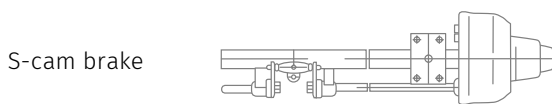
## 2. Vehicle data

Vehicle manufacturer \_\_\_\_\_  
Vehicle type \_\_\_\_\_

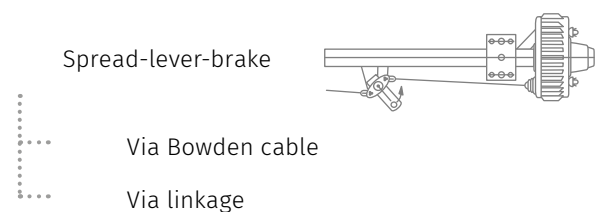
### Max. permissible speed

- ≤ 25 km/h
- ≤ 30 km/h
- ≤ 40 km/h
- ≤ 60 km/h
- > 60 km/h (ABS required)

## 3. Brake type



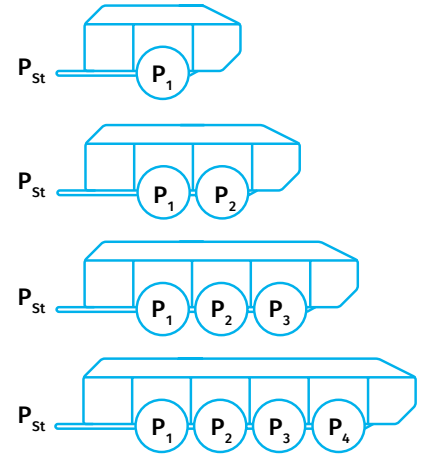
Disk brake



## 4. Load data

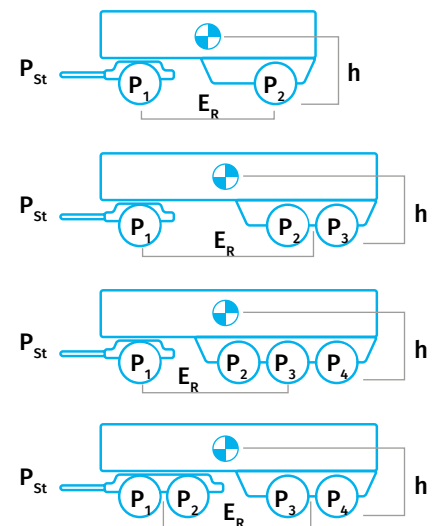
### Centre-axle trailer

	unladen	laden
Total mass (P)	_____ kg	_____ kg
Drawbar load ( $P_{St}$ )	_____ kg	_____ kg
Axle load ( $P_1$ )	_____ kg	_____ kg
Axle load ( $P_2$ )	_____ kg	_____ kg
Axle load ( $P_3$ )	_____ kg	_____ kg
Axle load ( $P_4$ )	_____ kg	_____ kg



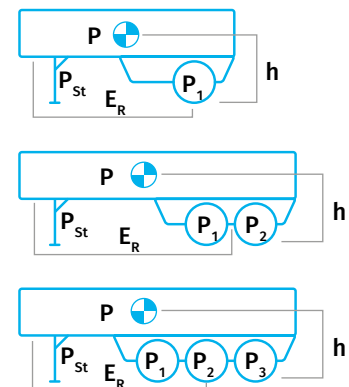
### Drawbar trailer

	unladen	laden
Total mass (P)	_____ kg	_____ kg
Drawbar load ( $P_{St}$ ) (e.g. for Dolly)	_____ kg	_____ kg
Axle load ( $P_1$ )	_____ kg	_____ kg
Axle load ( $P_2$ )	_____ kg	_____ kg
Axle load ( $P_3$ )	_____ kg	_____ kg
Axle load ( $P_4$ )	_____ kg	_____ kg
Centre of gravity height (h)	_____ mm	_____ mm
Existing wheel base ( $E_R$ )	_____ mm	_____ mm



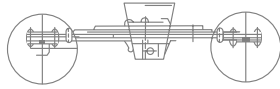
### Semi-trailer

	unladen	laden
Total mass (P)	_____ kg	_____ kg
Drawbar load ( $P_{St}$ )	_____ kg	_____ kg
Axle load ( $P_1$ )	_____ kg	_____ kg
Axle load ( $P_2$ )	_____ kg	_____ kg
Axle load ( $P_3$ )	_____ kg	_____ kg
Centre of gravity height (h)	_____ mm	_____ mm
Existing wheel base ( $E_R$ )	_____ mm	_____ mm

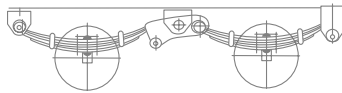


## 5. Aggregate type

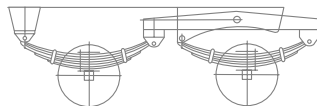
Bogie



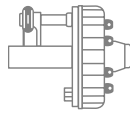
Assembly without dynamic suspension



Assembly with dynamic suspension



Stub-axle




Air-/hydraulic aggregate

### Suspension

- mechanical
- hydraulic
- pneumatic
- without

### Required for brake calculation

Wheel brake manufacturer (BPW, Knott, Peitz, ADR ...) \_\_\_\_\_

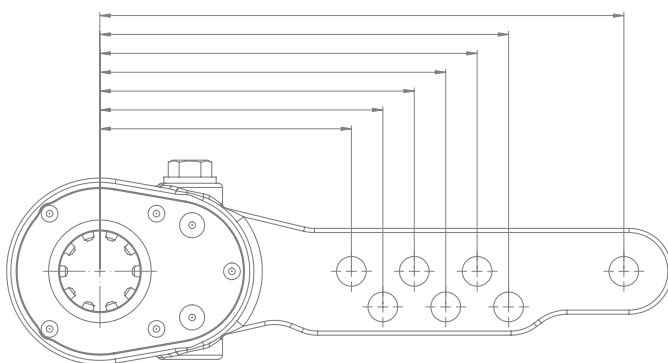
Wheel brake type (see type label on anchor plate ) \_\_\_\_\_

TDB-No. (certificate of wheel brake) \_\_\_\_\_

Tyre size and manufacturer \_\_\_\_\_

Please specify existing lever lengths (see example 1) \_\_\_\_\_ mm

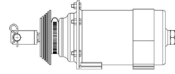
Example 1: Lever lengths examples



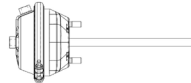
## 6. Equipment features

### Required cylinders

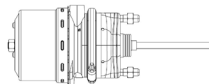
Piston cylinder



Diaphragm cylinder



Spring brake cylinder



### Load sensing

Manual control device

Automatic load sensing valve

Without load control

### Air supply for second trailer (air connection)?

Yes

No

### ABS-/EBS-System

ABS

EBS

### Required console for brake cylinder\*

Weld-on console

Screw console (only for piston cylinder)

Without console/s

\*Not included in the scope of delivery

### Which axle is braked?

Axle 1

Axle 2

Axle 3

Axle 4

### Cylinder quantity on this axle

0      1      2

0      1      2

0      1      2

0      1      2

Any other info you would like to share

Feel free to contact us  
if you have any questions.

Call us at

+49 (0) 4251 9340-0

Mail us

[info@tietjengmbh.de](mailto:info@tietjengmbh.de)